

SB60X30-36-8TD

60 X 30-36 CURVED FRONT SHOWER BASE WITH 8" TRENCH DRAIN
IMI LITECAST™

Note: Base dimensions may vary +/- 1/4"

* Also available in IMI ProCast™



Material to be crated and stacked on pallets.



Cast Marble Solutions

COLOR & TRIM OPTIONS

Standard Color	Code
White	SW

Optional Color	Code
Cream	SC
Ivory	SI
Warm White	WW



FEATURES

- **Shower size:** 60" x 36" (Curved 30" to 36")
- **Curb size:** 3" x 3"
- **Construction:**
 - * Solid one piece
 - * Pre-leveled
 - * Rests on the subfloor
 - * Grout-free
 - * Non-porous
 - * Water & Leak-proof
- **Resistant to:**
 - * Bacteria
 - * Mold and mildew
 - * Stains (easy to clean)
- **Flange:** Industrial composite (attached in our factory)

STANDARDS AND RATINGS

- Typical CSI Code: 22 42 23 (Div 22)
- Complies with ANSI Z124 Test
- Complies with ASTM F 462 (Anti-slip test) ,Our lowest value reading was 0.07, test requires 0.04
- MAS Certified Green

Code compliant when fully equipped and installed according to guidelines.



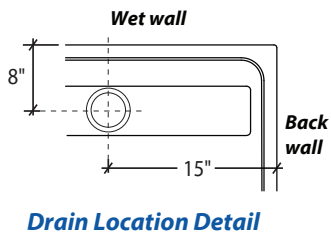
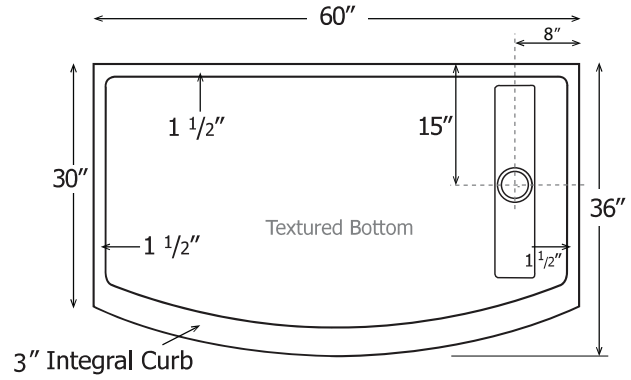
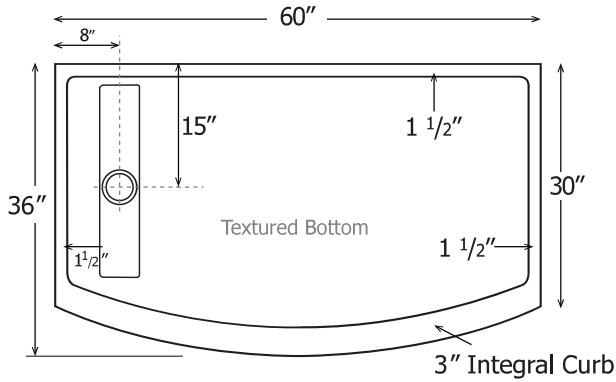
ABG HOSPITALITY



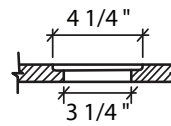
SB60X30-36-8TD

60 X 30-36 CURVED FRONT SHOWER BASE WITH 8" TRENCH DRAIN

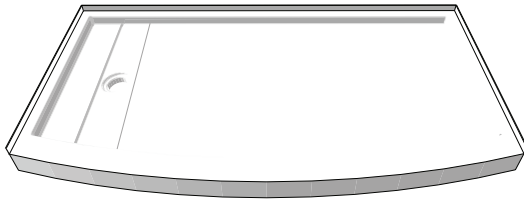
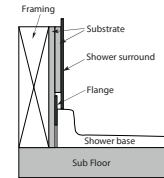
IMI LITECAST™



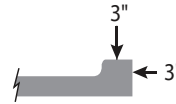
Drain Details: (U.S.)



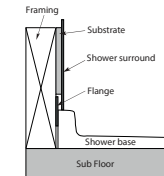
Flange Details: Fire Rated Walls (U.S.)



Side View of Curb



Flange Details: (U.S.)



FEATURES Dimensional Tolerance $\pm \frac{1}{4}$ ". Dimensions needed for site preparation should be measured from the unit. American Bath Group assumes no responsibility for preparatory work.

Type and Model #	Material	Shower Base	Pieces
Shower Base #SB60x30-36-8TD	Cast Marble	Anti-Slip/Textured Finish	1

DIMENSIONS

Specifications	inches
Shower Base Depth:	30-36
Shower Base Width:	60
Curb Height:	3
Curb Width:	3

v.2225