

# SB-RI-ADA-SC

62 X 31 SOLID SURFACE ROLL-IN SHOWER BASE  
IMI SOLIDCAST™

Exterior Dimensions: 62W x 31D  
**Note:** Base dimensions may vary +/- 1/4"



Material to be stacked on pallets.



### COLOR & TRIM OPTIONS

Standard Color	Code
White	SW



Solid Surface Solutions



### FEATURES

- **Shower size:** 62" x 31"
- **Construction:** \* Solid one piece  
\* Pre-leveled  
\* Rests on the subfloor  
\* Non-porous  
\* Solid Surface  
\* Contains minimum 60% solid particle aggregate aluminum hydroxide  
\* 40% acrylic modified polyester resin
- **Resistant to:** \* Bacteria  
\* Mold and mildew  
\* Stains (easy to clean)
- **Flange:** \* Integrated

### STANDARDS AND RATINGS

- Typical CSI Code: 22 42 23 (Div 22)
- ANSI
- MAS Certified Green
- Slip-resistance
- Breaking strength: 250 lbs. minimum

\*See terms and conditions for details.



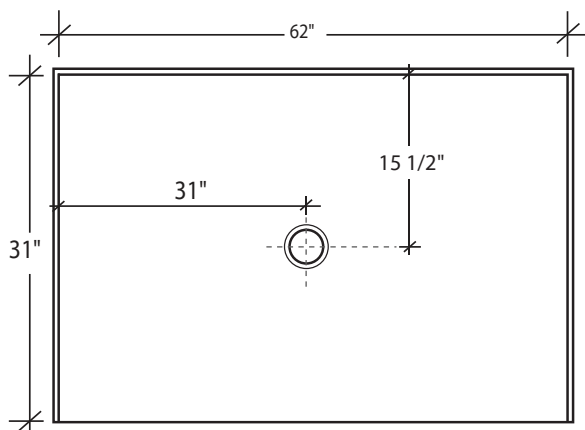
# SB-RI-ADA-SC

62 X 31 SOLID SURFACE ROLL-IN SHOWER BASE

IMI SOLIDCAST™

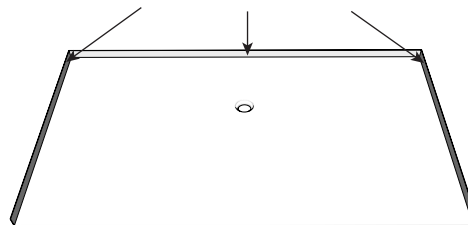
Note: Base dimensions may vary +/- 1/4"

## Top View

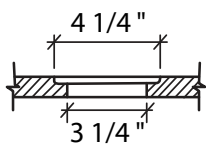


Front of base

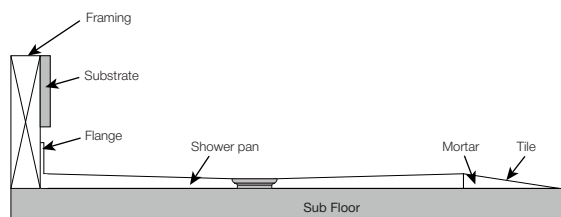
## Integrated flange



## Drain Details: (U.S.)



## Flange Details: (U.S.)



NOTE: 2% sloped towards the drain\*\*

**FEATURES** Dimensional Tolerance  $\pm 1/4$ ". Dimensions needed for site preparation should be measured from the unit. American Bath Group assumes no responsibility for preparatory work.

Type and Model #	Material	Shower Base	Pieces
Shower Base #SB-RI-ADA-SC	Cast Solid Surface	Anti-Slip/Textured Finish	1

## DIMENSIONS

Specifications	inches
Shower Base Depth:	31
Shower Base Width:	62
Threshold Height:	1 1/2 - 1 1/4 - 1 1/2
Threshold Width:	3

## SUGGESTED DRAINS

Image	Description
	Solvent Weld type fitting similar to Oatey Part No. 42097
	Compression type "No-Caulk" fitting similar to Oatey Part No. 42099