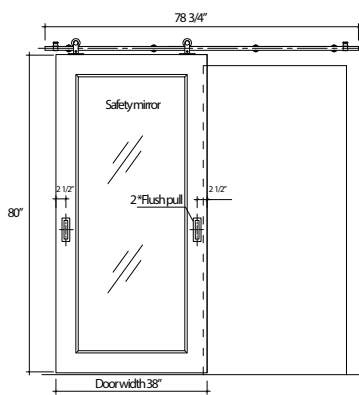
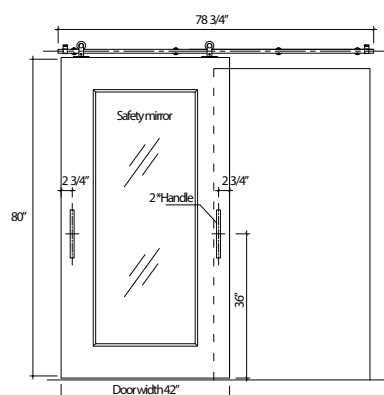


## TECHNICAL SPECIFICATIONS

- DIMENSIONS:**  
 Standard width: 36" to 38 1/2"      ADA width: 42"  
 Standard height: 78" to 85"      ADA height: 80"
- THICKNESS:**  
 1 3/4" or 1 3/8"
- MATERIAL:**  
 MDF core + LVL skeleton
- DOOR DESIGN:**  
 Single panel door with mirror on foyer side
- MIRROR:**  
 1/4" Thick safety-backed mirror with 1/2" bevel (foyer side)
- DOOR EDGE:**  
 LVL Edge-banding for strong screw holding
- BARN DOOR TRACK:**  
 Stainless steel customized hanger with tube track  
 \*Soft close standard
- PULL AND HANDLE:**  
 Stainless steel flush pull (Standard)  
 Stainless steel bar handle (ADA)  
 Customized options available
- LEAD TIME:**  
 12 - 16 weeks



Front View Standard



Front View ADA

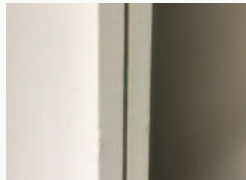


### What others offer you:

- Visible cracking of joints



- Rough door edging, no sanding



- 3 layer of MDF  
No wood edge for screw holding

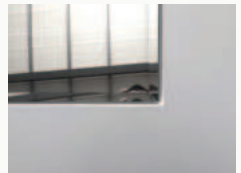


- Roller base with only 2 screws

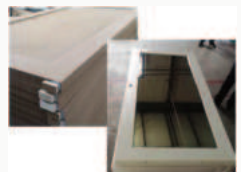


### Our products:

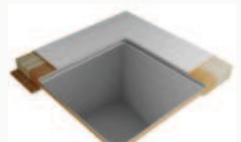
- Smooth finishing without any risk of cracking, one piece of HDF CNC carved design



- Sanding prior to the painting process.  
2 primer + 2 top coating layers  
(Multiple sanding in between the process)



- LVL built into door 4 edges to strengthen screw holding and resist door warping



- Roller base with 4 screws for holding a heavy weight door

