

TECHNICAL SPECIFICATIONS

• DIMENSIONS:

Standard width: 44"
 Standard height: 84"

• MATERIAL:

Structural composite solid core

• FINISH:

HPL to match 5483-8 mocca Firwood
 *Option to have 1/4" painted glass facing either side

DOOR EDGE:

- LVL Edge-banding for strong screw holding

BARN DOOR TRACK:

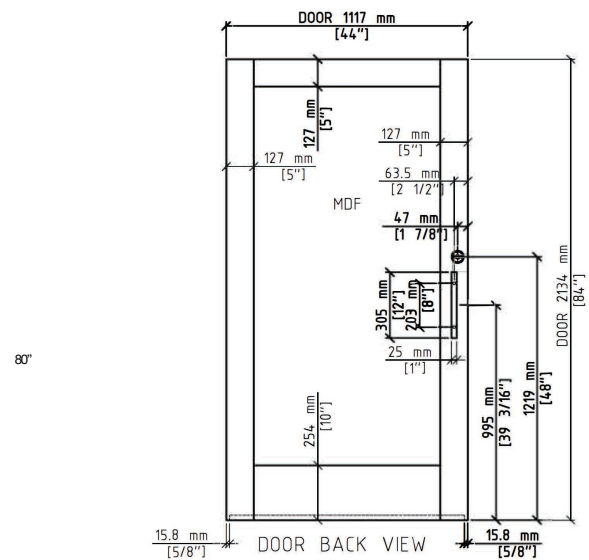
- Wall mounted aluminum track
 Wood valance, to match 5483-8 mocca Firwood
 Soft close standard

HANDLE:

- Stainless steel, copper core
 Customized options available
 Handle available in 12" or 24", customized options available

INCLUDES:

- Two pieces of blocking, wall thickness: 4 7/8"
 Stop strips





3D View (RH-Outside)



3D View (RH-Inside)

Aluminium sliding door hardware



Heavy duty sliding barn door lock

