

U-CURB SCHEMATICS
CAST MARBLE



COLOR & TRIM OPTIONS

Standard Color	Code
White	SW

FEATURES

- **Dimensions:** 3 1/4" x 4 1/4"
Maximum length 66"
- **Design:** Replacement for shower threshold

Can be trimmed in height to meet customer preference

Recommended for custom shower pans with centrally located drain

Do not require internal support
- **Installation:** The U-Curb can be cut to the desired length

RIDGID® Fiber cement saw with AirGuard™ Technology recommended for dust-free cutting

See installation instructions for more details

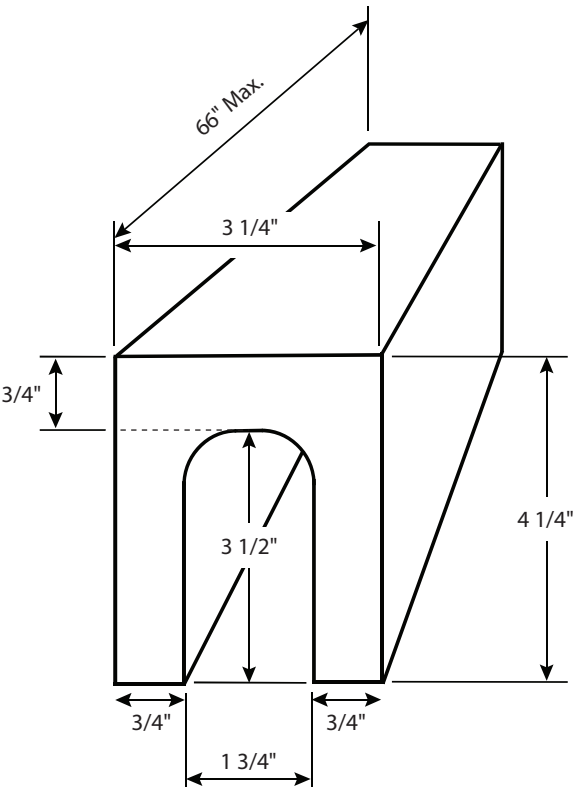
** See terms and conditions for details*

** Sold only in conjunction with our shower systems*

ACC-UC

U-CURB SCHEMATICS

CAST MARBLE



*Size not to scale

FEATURES

Dimensional Tolerance $\pm \frac{1}{4}$ ". Dimensions needed for site preparation should be measured from the unit. American Bath Group assumes no responsibility for preparatory work.

Type and Model #	Material	Pieces
U-CURB #ACC-UC	Fiber Cement	1